



ADA UNIT GOI
gateway series

1 Bedroom, 1 Bath, 795 SF

- FULL HOTEL AMENITIES AND CONCIERGE SERVICES AVAILABLE
- EXPANSIVE OPERABLE WINDOWS FRAMING VIEWS OF THE HISTORIC GATEWAY NEIGHBORHOOD
- FULLY INSULATED WALLS WITH ENHANCED THERMAL AND ACOUSTICAL VALUES
- OPEN PLANS WITH CONNECTED KITCHEN AND LIVING AREAS
- LUXURIOUS FINISHES WITH A WARM, NEUTRAL COLOR PALETTE
- DISTINCT ENTRYWAYS WITH WALNUT DOORS AND STONE THRESHOLDS
- COMPLETE LED LIGHTING PACKAGE
- KITCHENS WITH EUROPEAN STYLE WALNUT CABINETS, GRANITE COUNTERTOPS, MOSAIC SLATE BACKSPASHES, KOHLER FAUCETS, UNDERCABINET LIGHTING AND PREMIUM KITCHENAID STAINLESS STEEL APPLIANCES
- BATHROOMS WITH EUROPEAN STYLE VANITIES, GRANITE COUNTERTOPS, LARGE MIRRORS, SHOWERS WITH TILED BASINS AND WALLS, TOTO TOILETS AND KOHLER FAUCETS AND SINKS
- WALK-IN CLOSETS WITH PREMIUM HARDWARE AND SHELVING
- HIGH-EFFICIENCY HVAC, HOT WATER TANK AND WASHER / DRYER IN-SUITE

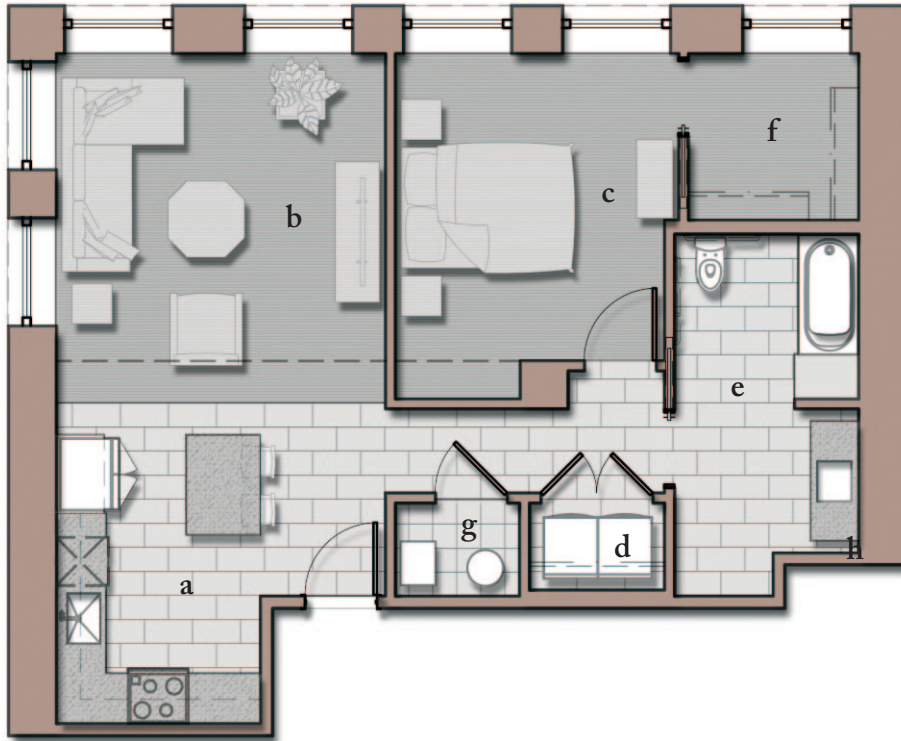
DOWNTOWN CLEVELAND
2000 EAST NINTH STREET
CLEVELAND, OHIO 44115

[THESCHOFIELDRESIDENCES.COM](http://theschofieldresidences.com)

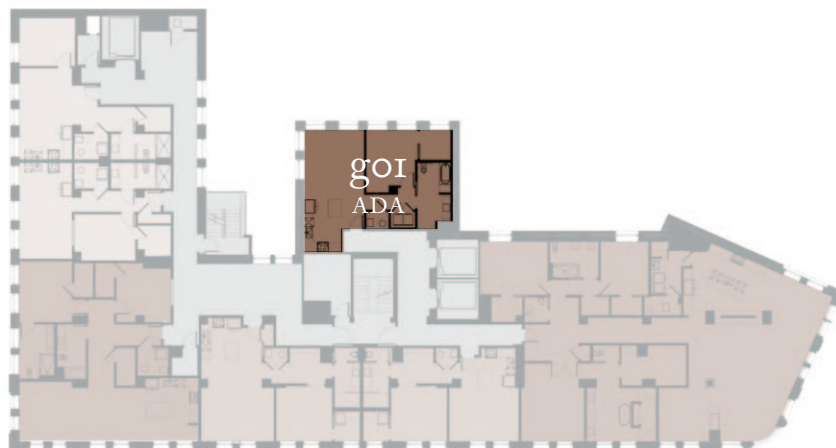


THE
SCHOFIELD
RESIDENCES

ADA UNITS
I20I, I30I
1 Bedroom, 1 Bath, 795 SF



- a) KITCHEN 13' x 13.5'
b) LIVING SPACE 14.5' x 13.5'
c) BEDROOM 14' x 11.5'
d) LAUNDRY 3.5' x 5.5'
e) BATHROOM 15' x 8'
f) WIC 7' x 7'
G) UTILITY ROOM 4' x 5'



NORTH →