



UNIT E05  
*executive series*

1 Bedroom, 1 Bath, 870 SF

- FULL HOTEL AMENITIES AND CONCIERGE SERVICES AVAILABLE
- EXPANSIVE OPERABLE WINDOWS FRAMING VIEWS OF EAST NINTH STREET, EUCLID AVENUE AND THE HISTORIC ROTUNDA
- FULLY INSULATED WALLS WITH ENHANCED THERMAL AND ACOUSTICAL VALUES
- OPEN PLANS WITH CONNECTED KITCHEN AND LIVING AREAS
- LUXURIOUS FINISHES WITH A WARM, NEUTRAL COLOR PALETTE
- DISTINCT ENTRYWAYS WITH WALNUT DOORS AND STONE THRESHOLDS
- COMPLETE LED LIGHTING PACKAGE
- BEDROOMS WITH WALNUT AND OPAL GLASS SLIDING DOORS
- BUILT-IN STUDIES WITH WALNUT CABINETS, SHELVING AND FOLD-DOWN DESKTOPS
- ISLAND KITCHENS WITH EUROPEAN STYLE WALNUT CABINETS, GRANITE COUNTERTOPS, MOSAIC SLATE BACKSPASHES, KOHLER FAUCETS, UNDERCABINET LIGHTING AND PREMIUM KITCHENAID STAINLESS STEEL APPLIANCES
- BATHROOMS WITH EUROPEAN STYLE VANITIES, GRANITE COUNTERTOPS, LARGE MIRRORS, SHOWERS WITH TILED BASINS AND WALLS, TOTO TOILETS AND KOHLER FAUCETS AND SINKS
- SPA BATHS WITH FLOATING VANITIES, EDGE-LIT MIRRORS AND CURBLESS SHOWERS
- WALL-HUNG, DUAL-FLUSH TOILETS AND TILED FEATURE WALLS
- WALK-IN CLOSETS WITH PREMIUM HARDWARE AND SHELVING
- HIGH-EFFICIENCY HVAC, HOT WATER TANK AND WASHER / DRYER IN-SUITE

DOWNTOWN CLEVELAND  
2000 EAST NINTH STREET  
CLEVELAND, OHIO 44115

[THESCHOFIELDRESIDENCES.COM](http://THESCHOFIELDRESIDENCES.COM)

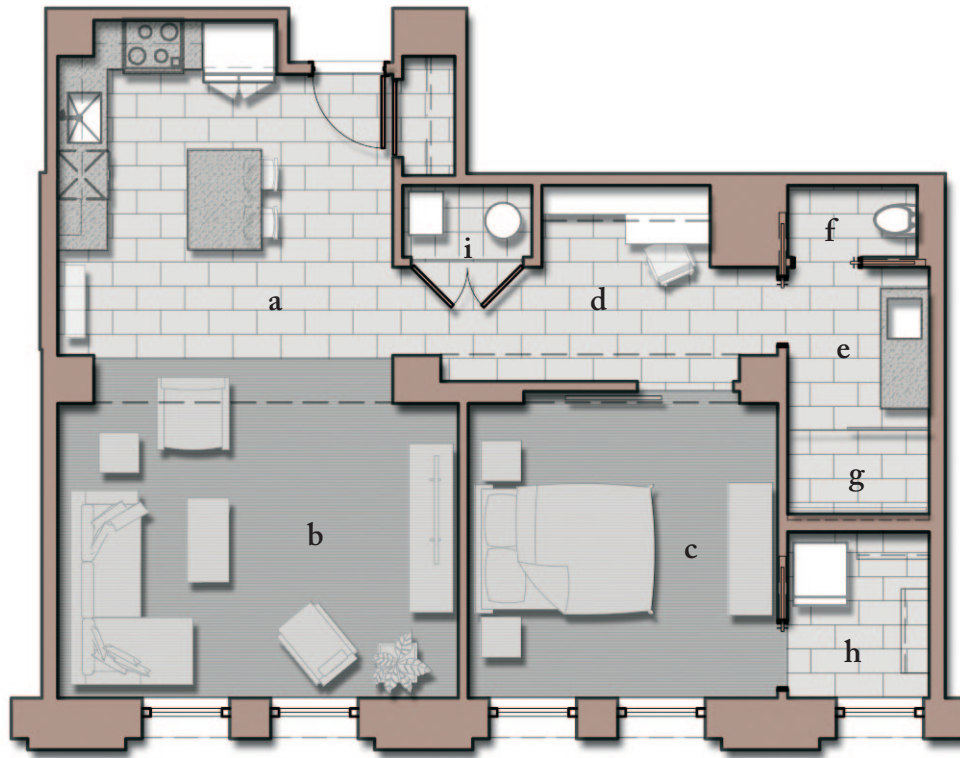


THE  
SCHOFIELD  
RESIDENCES

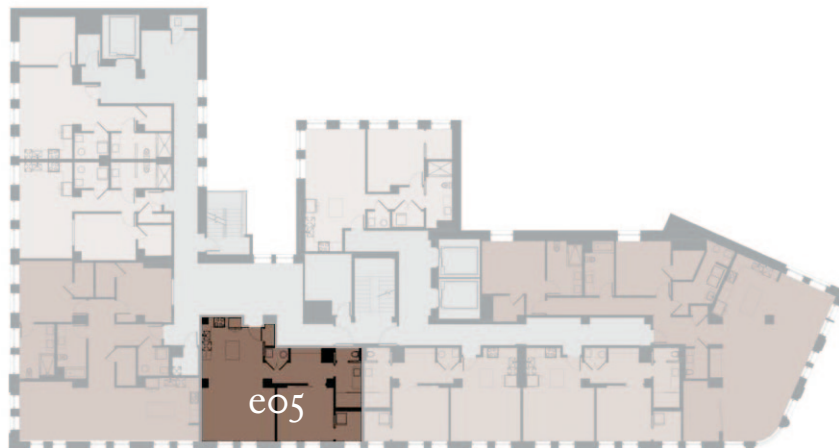
## UNITS

805, 905, 1005, 1105, 1205, 1305, 1405

1 Bedroom, 1 Bath, 870 SF



- |                             |                          |
|-----------------------------|--------------------------|
| a) KITCHEN 14' x 14'        | e) BATHROOM 13.5' x 6'   |
| b) LIVING SPACE 14' x 16.5' | f) TOILET COMPARTMENT    |
| c) BEDROOM 12.5' x 13'      | g) SHOWER                |
| d) STUDY 8' x 7'            | h) WIC & LAUNDRY 7' x 6' |
|                             | i) UTILITY ROOM 3' x 5'  |



NORTH →