



UNIT So4  
*signature series*

2 Bedrooms, 2 Baths, 1490 SF

- FULL HOTEL AMENITIES AND CONCIERGE SERVICES AVAILABLE
- EXPANSIVE OPERABLE WINDOWS FRAMING VIEWS OF EAST NINTH STREET, EUCLID AVENUE, THE HISTORIC ROTUNDA AND THE HISTORIC GATEWAY NEIGHBORHOOD.
- FULLY INSULATED WALLS WITH ENHANCED THERMAL AND ACOUSTICAL VALUES
- OPEN PLANS WITH CONNECTED KITCHEN AND LIVING AREAS
- LUXURIOUS FINISHES WITH A WARM, NEUTRAL COLOR PALETTE
- DISTINCT ENTRYWAYS WITH WALNUT DOORS AND STONE THRESHOLDS
- COMPLETE LED LIGHTING PACKAGE
- LARGE ISLAND KITCHENS WITH UPGRADED EXHAUST HOODS, FRENCH DOOR REFRIGERATORS, WALL OVENS AND COOKTOPS, EUROPEAN STYLE WALNUT CABINETS, GRANITE COUNTERTOPS, MOSAIC SLATE BACKSPLASHES, KOHLER FAUCETS, UNDERCABINET LIGHTING AND PREMIUM KITCHENAID STAINLESS STEEL APPLIANCES
- MASTER BATHS WITH FLOATING VANITIES AND TILED FEATURE WALLS
- BATHROOMS WITH EUROPEAN STYLE VANITIES, GRANITE COUNTERTOPS, LARGE MIRRORS, SHOWERS WITH TILED BASINS AND WALLS, TOTO TOILETS AND KOHLER FAUCETS AND SINKS
- WALK-IN CLOSETS WITH PREMIUM HARDWARE AND SHELVING
- HIGH-EFFICIENCY HVAC, HOT WATER TANK AND WASHER / DRYER IN-SUITE

DOWNTOWN CLEVELAND  
2000 EAST NINTH STREET  
CLEVELAND, OHIO 44115

[THESCHOFIELDRESIDENCES.COM](http://THESCHOFIELDRESIDENCES.COM)

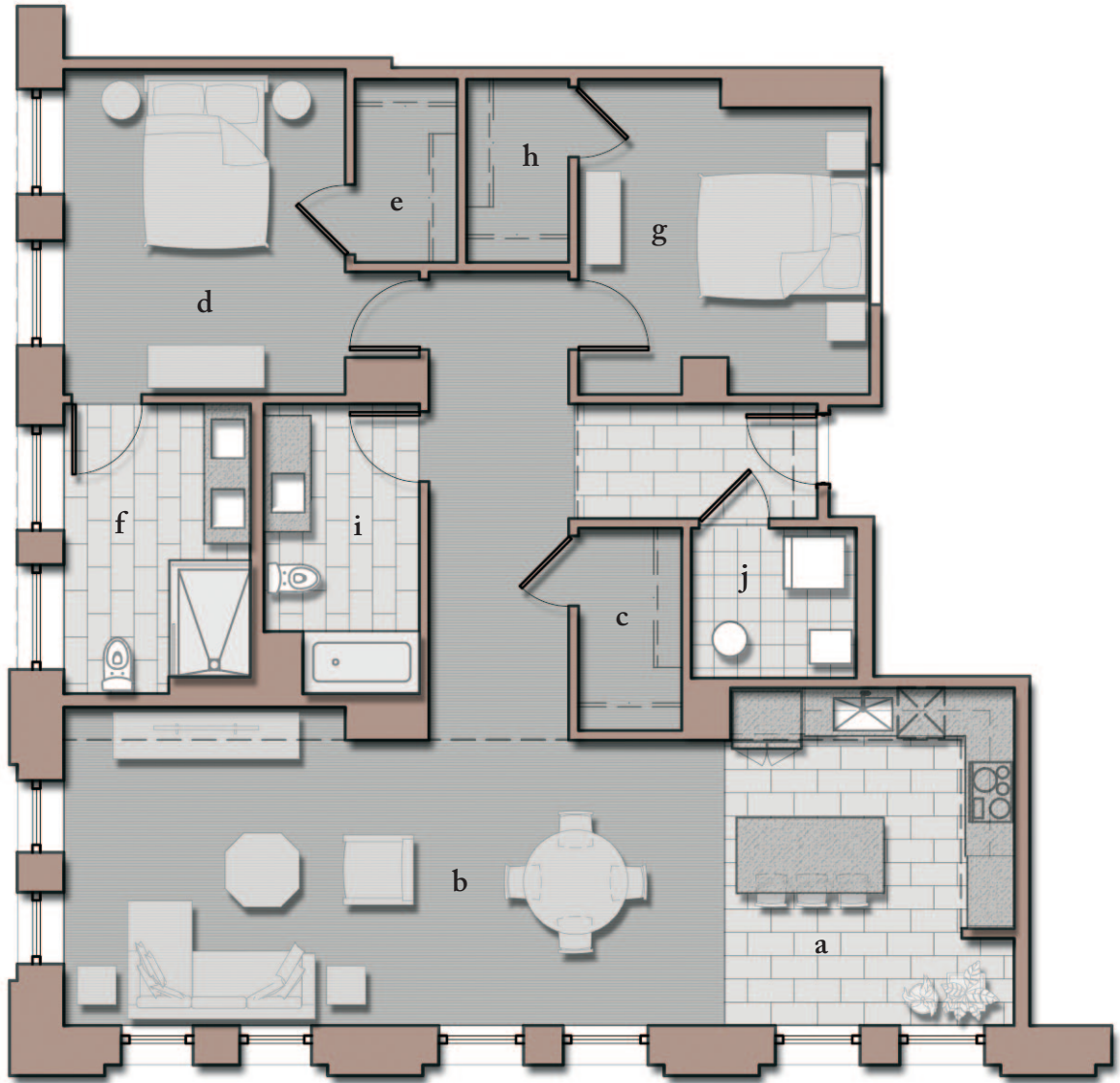


THE  
SCHOFIELD  
RESIDENCES

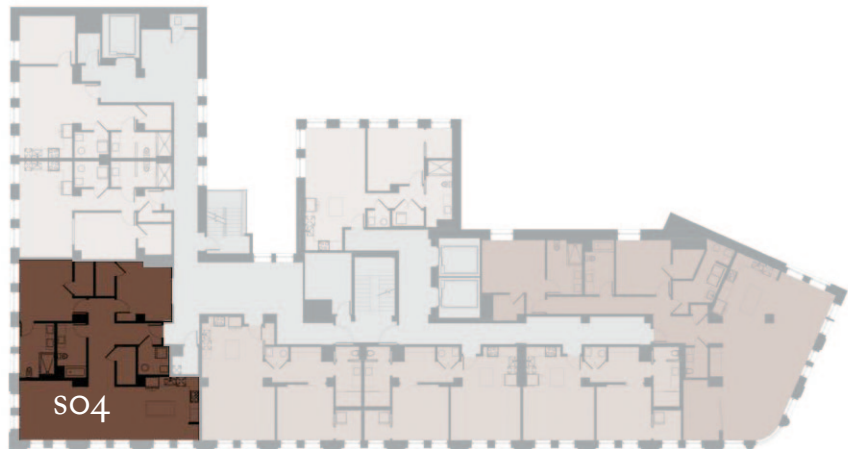
# UNITS

804, 904, 1004, 1104, 1204, 1304, 1404

2 Bedrooms, 2 Baths, 1490 SF



- a) KITCHEN 14.5' x 12'
- b) LIVING SPACE 13.5' x 28'
- c) ENTRY CLOSET 8.5' x 14'
- d) MASTER BEDROOM 14' x 12'
- e) WIC 7.5' x 4'
- f) MASTER BATHROOM 12' x 8'
- g) BEDROOM 13.5' x 12.5'
- h) WIC 7.5' x 4'
- i) BATHROOM 12' x 6.5'
- j) UTILITY ROOM 6' x 7'



NORTH →