



UNIT G02  
*gateway series*

1 Bedroom, 1 Bath, 705 SF

- FULL HOTEL AMENITIES AND CONCIERGE SERVICES AVAILABLE
- EXPANSIVE OPERABLE WINDOWS FRAMING VIEWS OF THE HISTORIC GATEWAY NEIGHBORHOOD
- FULLY INSULATED WALLS WITH ENHANCED THERMAL AND ACOUSTICAL VALUES
- OPEN PLANS WITH CONNECTED KITCHEN AND LIVING AREAS
- LUXURIOUS FINISHES WITH A WARM, NEUTRAL COLOR PALETTE
- DISTINCT ENTRYWAYS WITH WALNUT DOORS AND STONE THRESHOLDS
- COMPLETE LED LIGHTING PACKAGE
- KITCHENS WITH EUROPEAN STYLE WALNUT CABINETS, GRANITE COUNTERTOPS, MOSAIC SLATE BACKSPASHES, KOHLER FAUCETS, UNDERCABINET LIGHTING AND PREMIUM KITCHENAID STAINLESS STEEL APPLIANCES
- BATHROOMS WITH EUROPEAN STYLE VANITIES, GRANITE COUNTERTOPS, LARGE MIRRORS, SHOWERS WITH TILED BASINS AND WALLS, TOTO TOILETS AND KOHLER FAUCETS AND SINKS
- WALK-IN CLOSETS WITH PREMIUM HARDWARE AND SHELVING
- HIGH-EFFICIENCY HVAC, HOT WATER TANK AND WASHER / DRYER IN-SUITE

DOWNTOWN CLEVELAND  
2000 EAST NINTH STREET  
CLEVELAND, OHIO 44115

[THESCHOFIELDRESIDENCES.COM](http://theschofieldresidences.com)

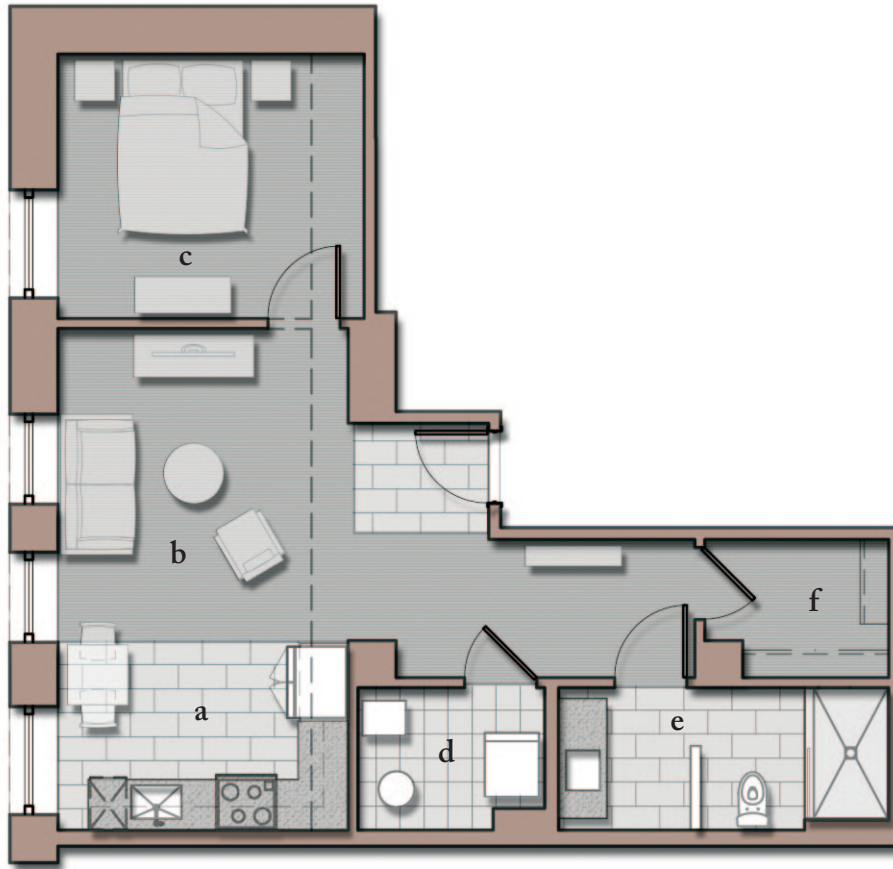


THE  
SCHOFIELD  
RESIDENCES

## UNITS

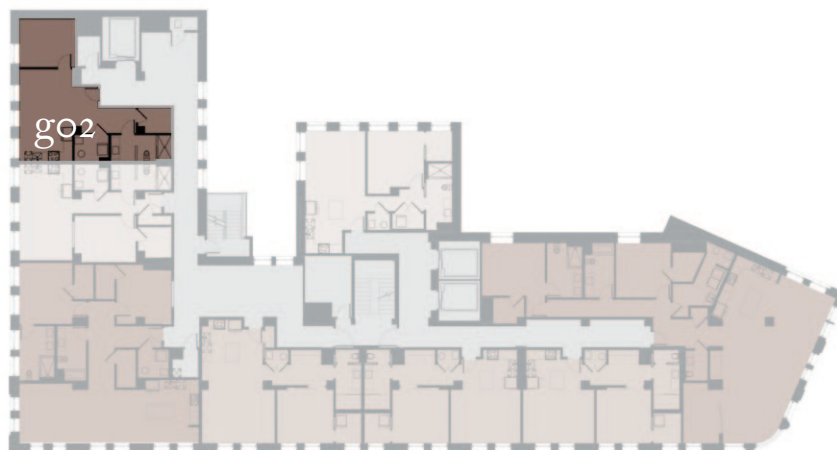
802, 902, 1002, 1102, 1202, 1302, 1402

1 Bedroom, 1 Bath, 705 SF



- a) KITCHEN 7.5' x 12'
- b) LIVING SPACE 13' x 26.5'
- c) BEDROOM 11' x 12.5'

- d) LAUNDRY 6' x 7.5'
- e) BATHROOM 6' x 13.5'
- f) WIC 5.5' x 7.5'



NORTH →